

**OLLSCOIL NA hÉIREANN, GAILLIMH  
NATIONAL UNIVERSITY OF IRELAND, GALWAY**

---

**SUMMER EXAMINATIONS, 2000**

---

**FIRST ENGINEERING**

**BIOMEDICAL, CIVIL, ELECTRONIC,  
ELECTRONIC and COMPUTING, ENVIRONMENTAL,  
INDUSTRIAL, MECHANICAL,  
and UNDENOMINATED**

---

**ENGINEERING GRAPHICS  
CE 101**

***Paper II***

Professor R. A. Falconer;  
Professor P. E. O'Donoghue;  
Dr. P. Ó hEachteirn.

Time allowed : *Two* hours

Answer *two* questions, including Question 1

Answer all questions on AutoCAD

**When finished your examination,**

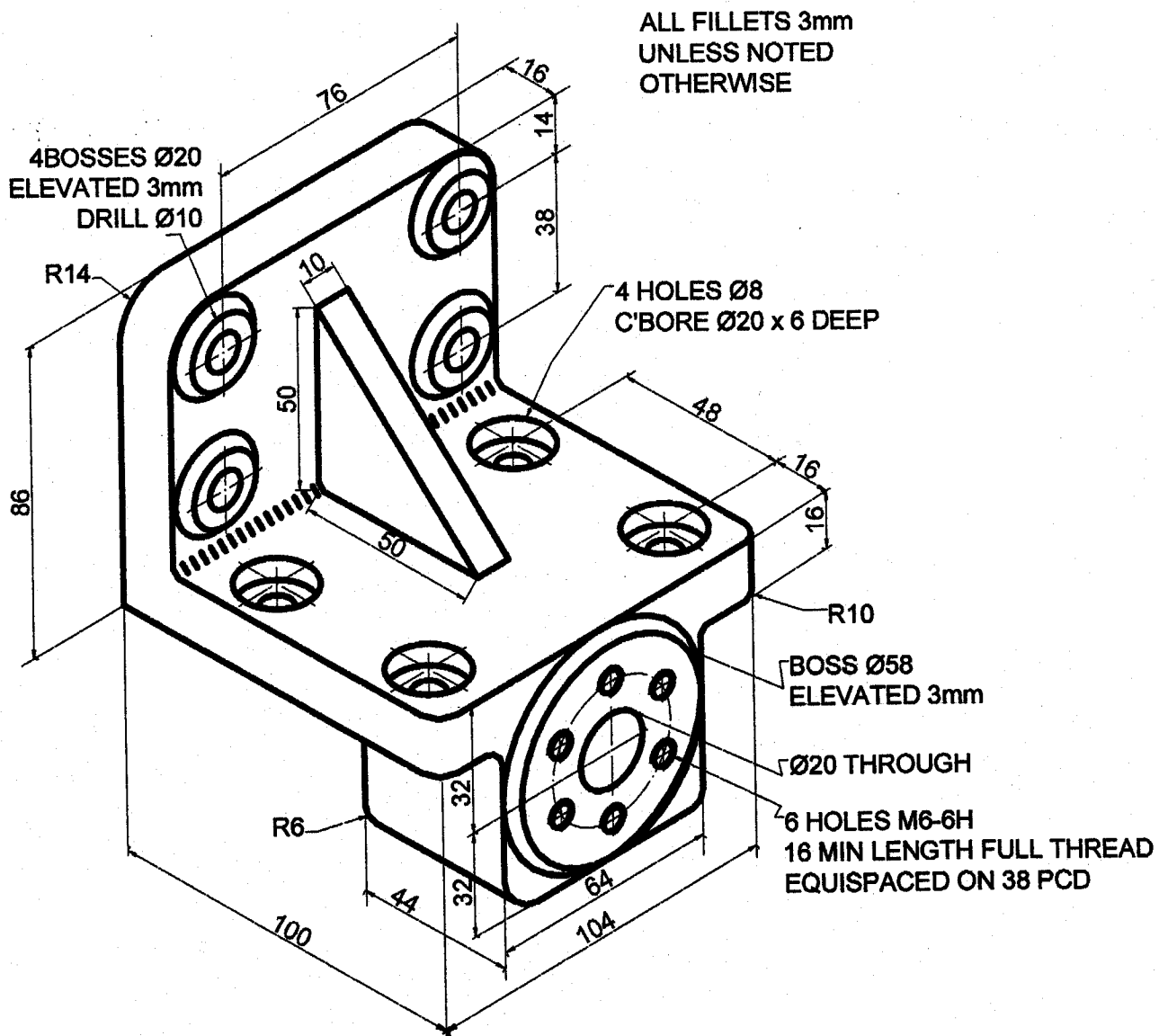
- Print your drawings on A4 paper,
- SaveAs on a 3.5" Diskette as filename **GRAPHICS2000-wxwz-abcd** where **wxyz-abcd** is your Student Identification Number

1. Figure Q1 shows details of a **HOUSING FIXTURE BRACKET**.

Using third angle projection, draw the following:

- (a) a front view, and
- (b) a right side view.

Dimension fully.



**Figure Q1. HOUSING FIXTURE BRACKET**

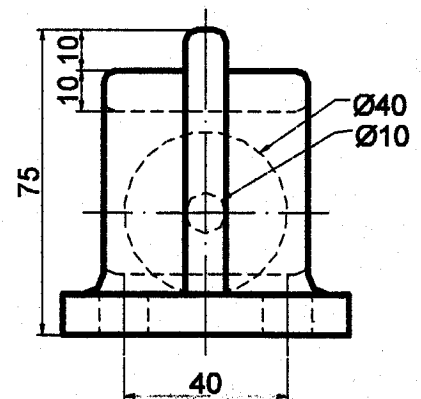
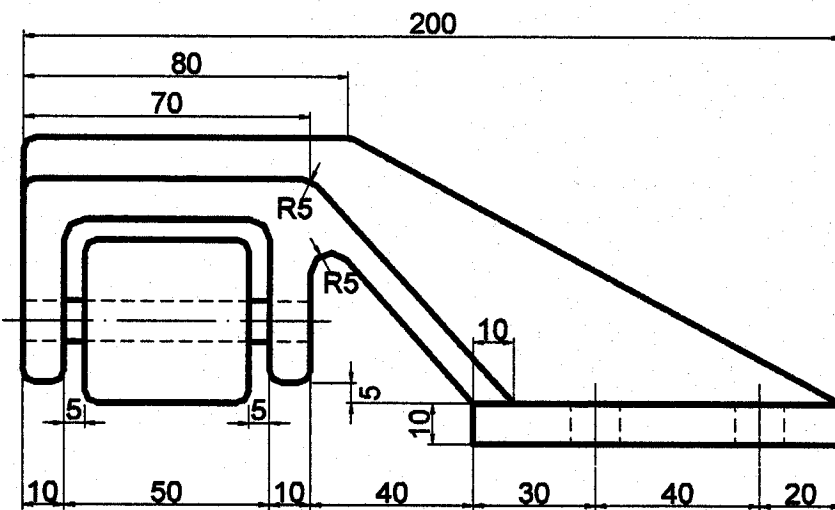
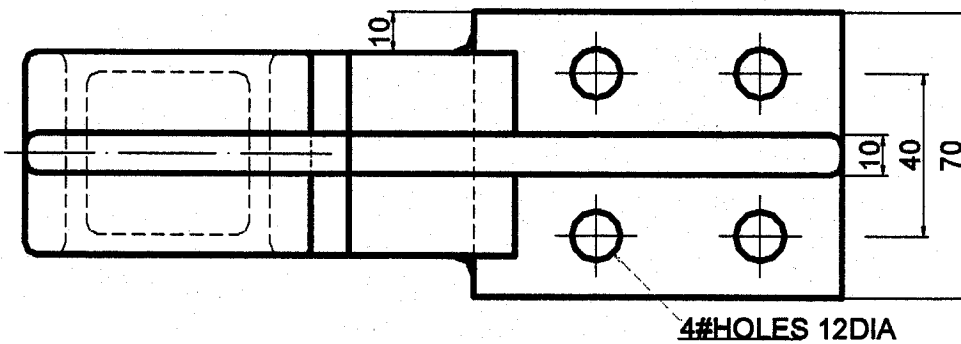
(25 marks)

2. Figure Q2 shows details of a HANGER ROLLER BRACKET, in third angle projection.

Using third angle projection, draw the following:

- (a) a front view,
- (b) a bottom view, and
- (c) a left side view.

Dimension fully.



**Figure Q2 HANGER ROLLER BRACKET .**

**(25 marks)**

3. Draw, full size, the profile of a radial plate cam, rotating anticlockwise, which will cause an overhead vertical follower to reciprocate as follows :

000°-060° : 30mm Rise with uniform acceleration  
060°-120° : 30mm Rise with uniform deceleration  
120°-150° : Dwell  
150°-210° : 20mm Rise with near-uniform velocity  
210°-240° : Dwell, and  
240°-360° : 80mm Fall with uniform simple harmonic motion

Use a minimum cam radius of 50mm. Use a follower roller diameter of 40mm. The vertical line of the follower is offset 30mm to the right of the cam centre of rotation. Use a smoothing radius of 5mm at the ends of the near-uniform velocity displacement diagram.

**(25 marks)**