

OLLSCOIL NA hÉIREANN, GAILLIMH  
NATIONAL UNIVERSITY OF IRELAND, GALWAY

---

SUMMER EXAMINATIONS, 2000

---

FIRST ENGINEERING

BIOMEDICAL, CIVIL, ELECTRONIC,  
ELECTRONIC and COMPUTING, ENVIRONMENTAL,  
INDUSTRIAL, MECHANICAL,  
and UNDENOMINATED

---

ENGINEERING GRAPHICS  
CE 101

*Paper II*

Professor R. A. Falconer;  
Professor P. E. O'Donoghue;  
Dr. P. Ó hEachteirn.

Time allowed : *Two* hours

Answer *two* questions, including Question 1

Answer all questions on AutoCAD

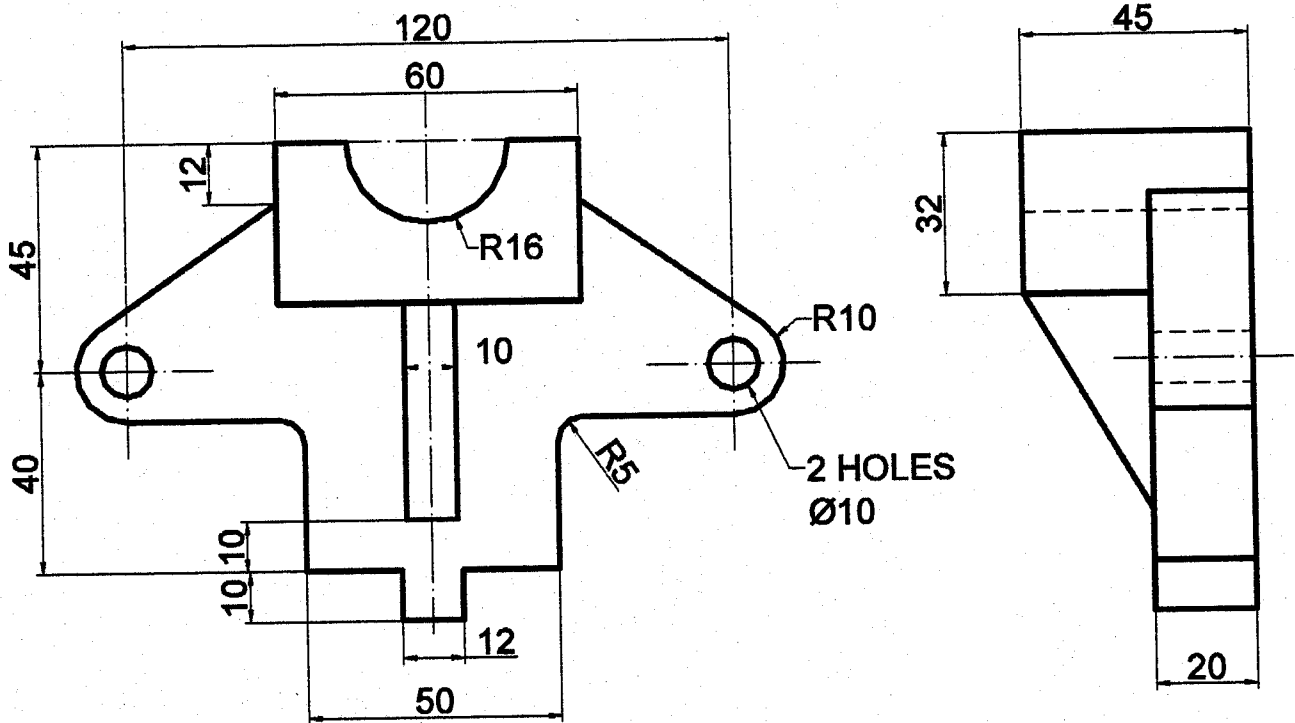
**When finished your examination,**

- Print your drawings on A4 paper,
- SaveAs on a 3.5" Diskette as filename **GRAPHICS2000-wxwz-abcd** where **wxyz-abcd** is your Student Identification Number



2. Figure Q2 shows details of a **CAMSHAFT BEARING**. Make an isometric drawing of it, viewing it from above and from the right.

Dimension fully.

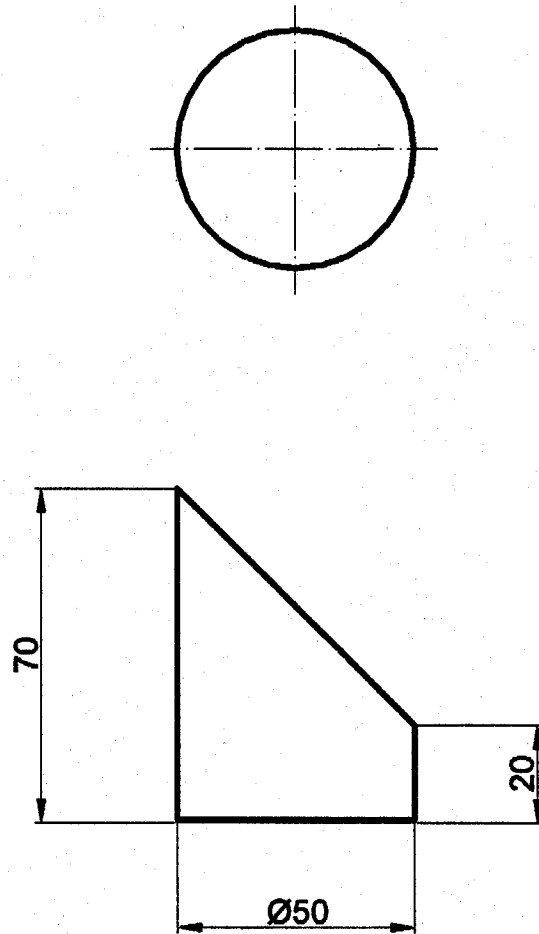


**Figure Q2 CAMSHAFT BEARING**

**(25 marks)**

3. Draw, full size, the given views of the **STORAGE BOX** in the shape of a truncated cylinder, as shown in Figure Q3. Draw also the following:
- (a) an auxiliary view of the inclined top surface (i.e., the lid),
  - (b) a development of the surface of the **STORAGE BOX**.

Dimension fully.



**Figure Q3 STORAGE BOX**

**(25 marks)**