

Ollscoil *na* hÉireann, Gaillimh
National University of Ireland, Galway

SUMMER EXAMINATIONS, 2001

FIRST ENGINEERING

**CIVIL, INDUSTRIAL, MECHANICAL,
BIOMEDICAL, ENVIRONMENTAL,
and UNDENOMINATED**

**ENGINEERING GRAPHICS II
CE 112**

Paper I

Professor R. A. Falconer;
Professor P. E. O'Donoghue;
Dr. P. Ó hEachteirn.

Time allowed : ***Two*** hours

Answer ***two*** questions, **including Question 1**

Answer questions on AutoCAD except for manual sketching questions

Answer questions on A3 drawing sheets only

Use one side only of the drawing sheet

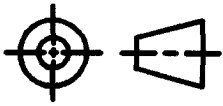
Do not erase construction lines

(QUESTION 1 IS OBLIGATORY)

(QUESTION 1 IS OBLIGATORY)

1. Figure Q1 shows, full-scale, details of a **TOOL HOLDER**. Using third angle projection, draw the following:
- (a) a front view,
 - (b) a right side view, and
 - (c) a top sectional view, the cutting plane being horizontal and 31mm above the base.

Dimension fully.



Scale 1:1

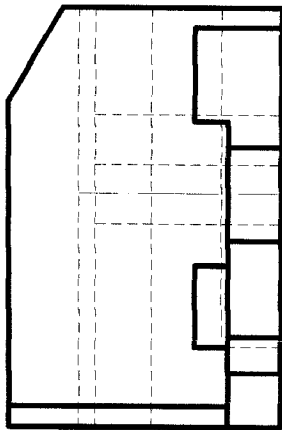
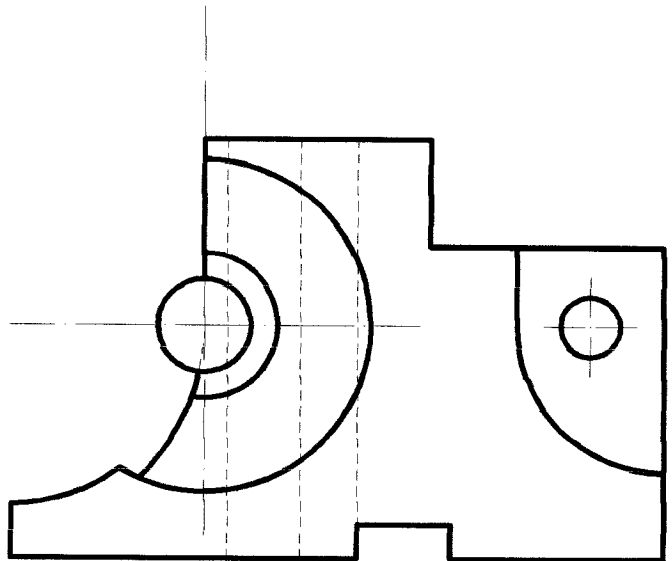
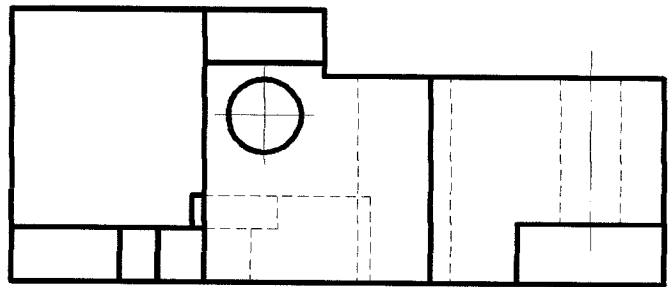


Figure Q1 TOOL HOLDER

(25 marks)

2. Figure Q2 shows details of a **COUPLING**. Make an isometric drawing of it, viewing it from above and from the left.

Dimension fully.

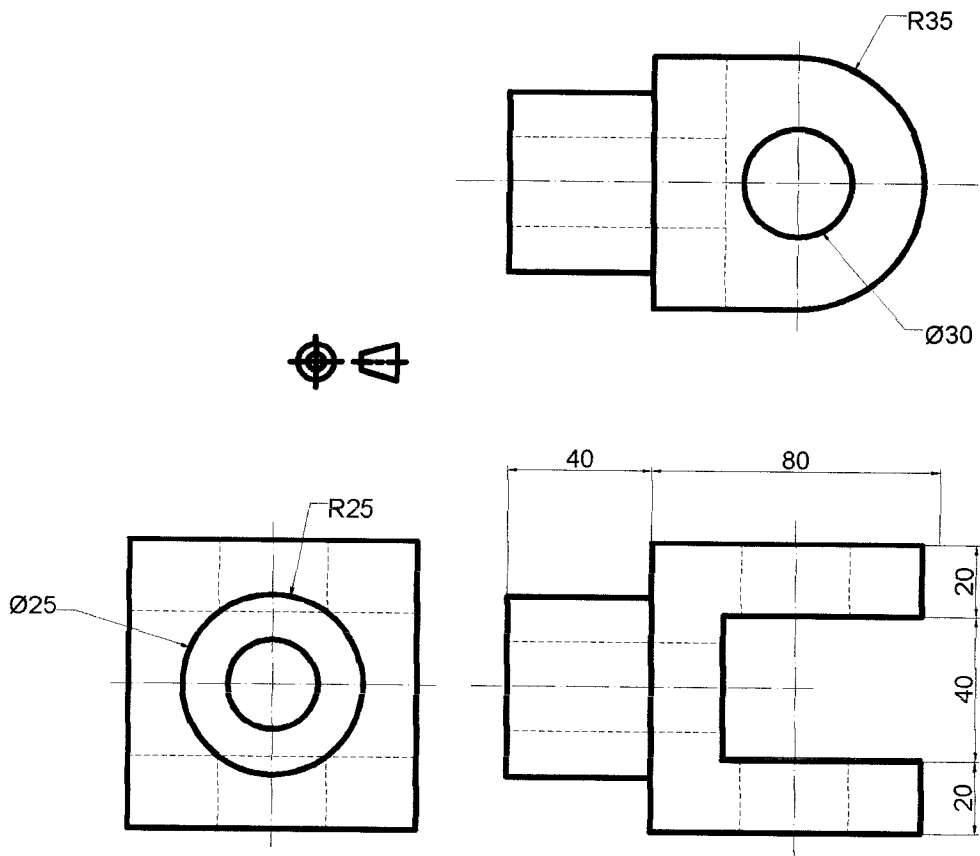


Figure Q2 COUPLING

(25 marks)

3. **Sketch** oblique views, as specified, on the attached sheet of the objects detailed thereon.

(25 marks)